

# Adversaria

ISSN 1471-9355

THE JOURNAL OF THE BLANCHARD FAMILY HISTORY SOCIETY

Volume 14 Issue 3 | Winter 2010

## Charles Thomas Blanshard M.A.

Charles Blanshard was born in Seacroft, now a suburb of Leeds, on 26 January 1852, the only son of Rev. Richard Hardy Blanshard, clerk, who later became the vicar of St.Oswald's church, Flamborough, near Scarborough, North Yorkshire. Charles' grandfather was Richard Blanshard of Northallerton, Gentleman, whose will has been transcribed and is available on the Blanchard Society [wiki](#).

In the Spring 2002 issue of Adversaria (Volume 6, Issue 4, p.51) we read about their ancestor William Isaac Blanshard, who invented a form of shorthand in the late 1700s, which he used in his job as a barrister.

Charles attended Clifton College, Bristol where he was living with his widowed mother Frances and sisters



Ellen and Catherine at 9 Tottenham Place, his father having died in 1866 at Clifton. In Census year 1871 he won a scholarship to Queen's College, Oxford and in 1874 he was the first person at that university to take a first class degree in Chemistry and Physics. He also started the Oxford School of Shorthand.

His teaching career encompassed natural science, shorthand and modern languages and in 1881 he was living with wife Mary in Brighton, Sussex, working as a teacher. The census also tells us he was a Fellow of the Chemical Society.

Between 1886 and 1891 he was headmaster at Calday Grange Grammar School (founded 1636), on the Wirral and indeed, wife Mary was a Birkenhead girl.

Legal papers in the East Riding



The crest of Calday Grange

archives indicate that he was living in Epsom, Surrey in 1892. Was he teaching locally?

*continued on page 28*



Clifton College was founded in 1862. In its early years it was notable for emphasizing science in the curriculum, and for being less concerned with social elitism.

### Historical Directories

[www.historicaldirectories.org](http://www.historicaldirectories.org)

A FREE searchable website constructed by the University of Leicester of local and trade directories of England & Wales 1750-1919.

There is a note to say that the site will remain freely available 'for the next three years' but that was in January 2004. Search it while you can!

#### Post Office Directory, London 1910

**George Blanchard & Co,**  
Hearthstone & pipe clay manufacturer  
237 Walworth Road, SE London  
**William Blanchard & Co**  
Waste paper dealers

46 Artillery Lane, East London  
and 391 Kingsland Road, NE London  
**Blanchard Patent Oil Light Co**  
138 Leadenhall Street, EC London  
**Blanchards (London) Ltd** Restaurant  
9 Beak Street, Regent Street, West London  
**Charles Blanchard** China restorer  
6 Little North Street, Lisson Grove NW London  
**John James Blanchard** Chandler's shop  
119 Adrian Terrace, Ifield Road, SW London  
**Mrs Susan Blanchard** Beer retailer  
287 King's Road, Chelsea SW London

### DEADLINE

The next issue of  
**Adversaria**  
will be published in April

### IN THIS ISSUE

Charles Thomas Blanshard MA	p.25	Gloucestershire Blanchards	p.28
Historical Directories	p.25	Blanchard's Exeter Timetable	p.28
Blanchard tankard	p.26	Blanchards in the American Civil War	p.29
Kent Blanchards	p.26	News & Website Corner	p.30
Death Duties	p.27	1901 Census London Part 1	p.31

## BLANCHARD FHS

CHAIRMAN  
**John Blanchard**

MEMBERSHIP SECRETARY  
**Wendy Hawkins**

TREASURER  
**Anne Blanchard**

EDITOR OF AdversariA  
**Caroline Wetton**

General enquiries should be sent to the  
Membership Secretary

Society website  
[www.blanshard.org](http://www.blanshard.org)

## AdversariA

AdversariA is the journal of the Society and is published quarterly. Contributions are always very welcome. Material for publication is accepted in good faith but views are those of the contributors, not necessarily those of the Society or the officers. All reasonable care is taken when collecting information but members are advised to check all sources / references themselves particularly before parting with money for certificates etc.

### SUBSCRIPTIONS

Ordinary member **£10**

Couple **£13**

Overseas member **£15**

Couple **£17**

## BLANCHARD TANKARD



This silver-plated 110mm high, half-pint tankard was for sale on the Internet. The decoration is a 'belt' with the lettering Blanchard's Beak Street. Blanchard's was a restaurant, the history of which has been extensively covered in past issues of AdversariA. It was made by John Round & Sons, Sheffield and sold by H. Turner, Paddington, who was probably Round's agent in London.

Ed.



*View of Blanchard's Restaurant in Beak Street, London. The famous Regent Street is off to the left of this photo. Sadly the view today has completely changed.*

## Kent Blanchards

### KELLY'S DIRECTORY OF KENT - 1870

**ERITH**  
COMMERCIAL  
William Blanchard / Smith & farrier /  
High Street

**LESSNESS HEATH (Erith)**  
COMMERCIAL  
William Blanchard / Beer retailer /  
Victoria Street

## DEATH DUTIES

**Death Duty Registers** hold details of wills and bequests for estates liable to death duties. The Death Duty Registers at the National Archives (Kew) cover the 'country court' death duty registers (in other words, from Courts other than the Prerogative Court of Canterbury or PCC) for the period 1796 to 1811.

Details include information about the deceased including what their *personal estate* was worth; those named to carry out the instructions; those named to inherit something and how they were related to the deceased; any special arrangements; the amount of tax that was paid.

Many claims for death duty arose long after the death of the testator, for example when a life tenant of the estate died. All the registers are regarded as "still in the making" for 50 years from the date of opening. This means that further comments could be added to the registers many years after the first entry and so they can include additional information such as dates of death of spouse; dates of death or marriage of beneficiaries; births of posthumous children and grandchildren; change of address; references to law suits and cross-references to other entries.

The Blanchard entries listed below can be downloaded from the National Archives web-site for £3.50 per item via *Click&Buy* (pay by credit or debit cards; via your BT telephone bill or credit bought for cash at Payzone outlets countrywide).

Ed. 

Item Description	Date	Reference Number
Abstract of Will of Sarah Blanchard of Tidworth, Berkshire. Proved in the Court of Salisbury.	May 01 1810	IR 26/411
Abstract of Will of John Blanchard, Yeoman of North Bradley, Wiltshire. Proved in the Court of Salisbury.	October 22 1808	IR 26/411
Abstract of Administration of Thomas Blanchard of St James Westminster, Middlesex	June 07 1808	IR 26/382
Abstract of Will of Elizabeth Blanchard, Widow of Tavistock, Devon. Proved in the Court of Exeter.	June 02 1808	IR 26/343
Abstract of Will of Elizabeth Blanchard, Spinster of Buckland Monachorum, Devon. Proved in the Court of Exeter.	June 02 1808	IR 26/343
Abstract of Administration of Edward Blanchard, Taylor and Widower of Kimpton, Hampshire	October 25 1807	IR 26/414
Abstract of Will of William Blanchard, Gentleman of Wisbech in the Isle of Ely, Cambridgeshire	October 03 1806	IR 26/332
Abstract of Will of William Blanchard, Clothier of Tavistock, Devon. Proved in the Court of Exeter.	May 26 1806	IR 26/342
Abstract of Will of Samuel Blanchard, Farmer of Tidd Saint Giles in the Isle of Ely, Cambridgeshire. Proved in the Court of Durham.	October 16 1802	IR 26/331
Abstract of Administration of Anthony Blanchard, Yeoman of Rainton in the parish of Topcliff, Yorkshire. Proved in the Court of York.	September 04 1802	IR 26/425
Abstract of Will of Joseph Blanshard, Gentleman of Barby in the parish of Hemingbrough, Yorkshire. Proved in the Court of York.	March 13 1807	IR26/428

## EDITORIAL

I hope that you all had a lovely Christmas and have or are enjoying the seasonal weather! Here's to a peaceful New Year and success in all your endeavours.

I know I seem to mention it a lot but getting an issue of Adversaria together gets harder and harder each time. I've been saved by the 1901 census listing for which I'm really grateful to Lesley Blanchard. This will be serialised in subsequent issues.

Over 20 years ago I inherited a Blanchard photo album. Like most albums of its time very few of the photos are named, although most of them have the name of the photographer somewhere and I despaired of ever finding out who they were. Through serendipity I've been able to identify some of them and recently the internet proved fruitful. A descendant of the extended family for whom my great aunt worked put his family tree on the internet. I sent him a photo from my album that I thought I had identified as one of his and we are now beginning to identify others in my collection. It just goes to show, if you wait long enough . . .

We are now in the process of indexing Adversaria. If you can help with this project please contact me. I know it sounds boring but it would help us enormously.

I'm also extracting Blanchards from the London Parish baptism Records on Ancestry.com. Getting the initial listing is easy but for extra info (birth, abode and occupation) each image has to be downloaded separately. As I can only access the web-site at the library this is going to take some time but it will be a good resource in the future. If you feel like extracting the marriages or burials, again, please contact me

Happy researching!  
Caroline



## Charles Thomas Blanshard M.A.

continued from front page

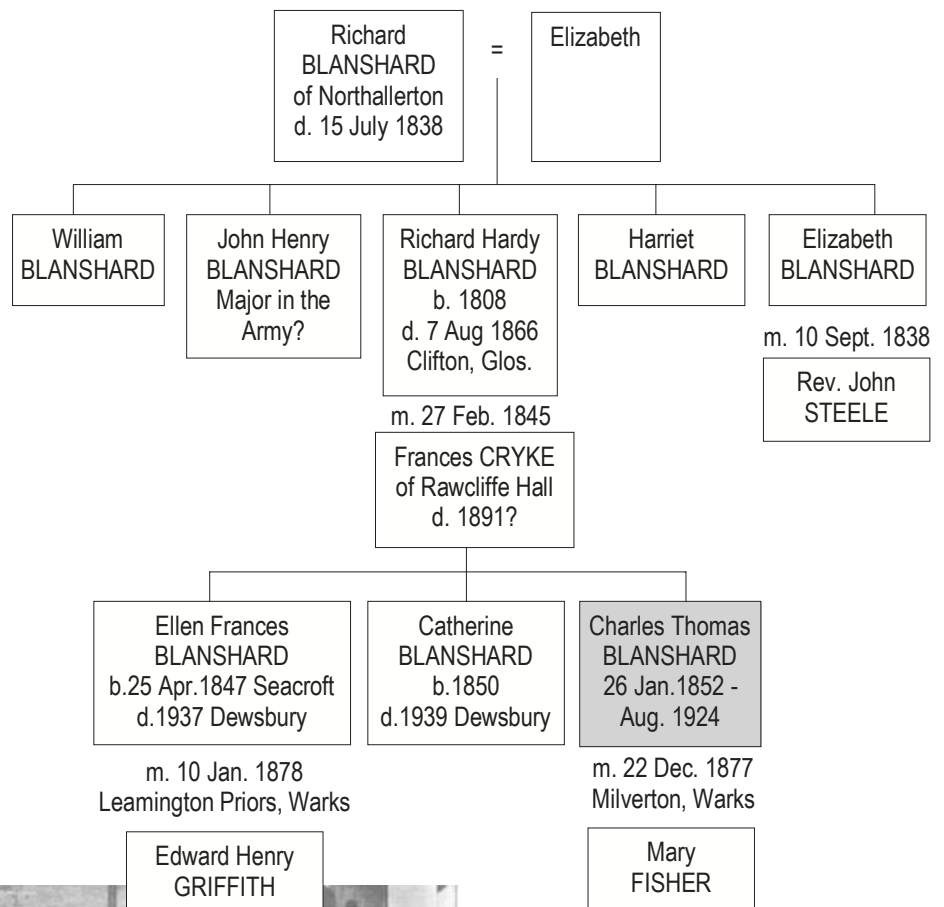
He was an enthusiastic foreign traveller, three trips being made in a canoe, and was fond of mountaineering and cycling.

His other great love was chess and apart from writing books on the subject he contributed to a column in the Western Daily Mercury and founded the Totnes Chess Club in October 1901. He was participating in a correspondence match for Devon at the time of his death in August 1924.

Charles was part of the extended family of past members *Jocelyn Blanshard* and *Blanshard Bayley Maynard* who seem to have had more than their fair share of interesting family members, many of whom are documented in past issues of *Adversaria*.

Caroline Wetton (39) 

Photo taken at Goodbody's Cafe, Plymouth 1903 during the Southern Union Congress (of chess players), Charles is seated in the centre.



## Gloucestershire Blanchards

St James the Less's Churchyard, Iron Acton, Gloucestershire (transcribed by Rosemary Lockie)

William, husband of Emily BLANCHARD, d. 12 Feb 1897, aged 41  
 Emily, 30 April 1939, aged 80  
 Frederick Augustus, son, 1 Aug 1899, 17

B 1855 Q2 Blanchard William  
 D 1897 Q1 Blanchard William 41  
 B 1882 Q3 Blanchard Frederick Augustus  
 D 1899 Q3 Blanchard Frederick Augustus 17

GLS Chipping Sodbury 6a 151  
 GLS Chipping Sodbury 6a 146  
 GLS Chipping Sodbury 6a 208  
 GLS Chipping Sodbury 6a 163



**Blanchard's Exeter Railway Timetable and Shopping Guide.**

Effective for August 1st - September 23rd. No year given but thought to be 1930s.

Published by The Blanchard Publicity Company, 61 Ward's Road West, Ilford, London

# BLANCHARDS IN THE AMERICAN CIVIL WAR



Llewellyn J Blanchard, from Ingham County, who served from 1861 to 1865, was Captain of Company B, 2<sup>nd</sup> United States Sharpshooters and later transferred to the 5<sup>th</sup> United States Infantry.

### Volunteer Sharpshooters (Unionists)

Before the outbreak of the Civil War, a few hand picked sharpshooters were used as a presidential guard.

On the 14th of June 1861 approval was given for Colonel Hiram Berdan to raise a fighting regiment of Sharpshooters. By September the 24th the 1st regiment (10 companies) had been formed and had arrived in Washington. A second was authorised soon after as more volunteers passed the qualification test.

Sharpshooters were organised to fight primarily as skirmishers and long range marksmen, in advance of the main body or to the flanks, they were to engage the enemy, first to halt their advance, as well as to give early warning of their approach. They often had to act as individuals and with their daily rations went to the front line to snipe at key figures in the opposing force.



Colonel Lewis Merrill leading his men

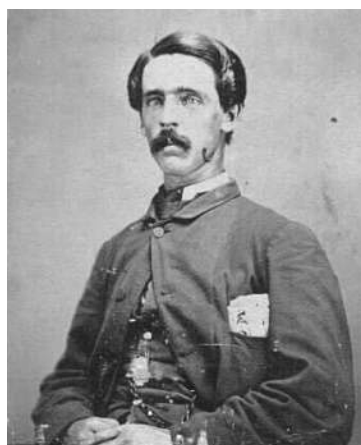


William H Blanchard enlisted in Company H, Seventh Infantry on 8 August 1861 for 3 years, aged 21. He was wounded in action at the battle of Antietam (23,000 casualties), on 17 September 1862 and discharged at Frederick City, Maryland on January 10 1863. He died 17 January 1903 and is buried at Otion, Michigan.



Jonathan Blanchard, from Ann Arbor, Michigan, was Chaplain for the Twenty-sixth Michigan Infantry. He entered service November 28, 1862 at the age of 45 and discharged a year later because of an unspecified disability.

*The Battle of Antietam, Maryland 1862 where 23,000 men were killed or injured*



Charles W. Blanchard from Middleville, Michigan served as a soldier in Company I, Merrill Horse Volunteers from 1861-1865

**200 Recruits Wanted for MERRILL'S HORSE.**

THE War Department having ordered no more State troops to be taken into the service, this is the only chance for patriots to assist the Government in sustaining itself. The Regiment is designated to protect the Mail and Emigrant route to California, which is one of the most healthy locations troops can have. The recent successes should impell all lovers of law, order and the principles of free Government to rush to the standard of their country, and in 90 days they will be able to say they had the honor of helping save it. Pay commences from day of enlistment. Recruits will have choice of companies and transported free to the Regiment.

GARRISON BARKER, Capt., and Recruiting Officer, stationed at Utica, Mo.

Recruitment poster for Merrill's Horse Volunteers

## NEWS & WEB-SITE CORNER

Sandra Randall (119) has volunteered to put together notes on web sites and other family history news that members may find useful for all family research.

If you have details about interesting sites please send them to Sandra (e-mail or post — see Membership List) for inclusion in what we hope will be a regular feature.

### LIBRARIES

You may now use your library card in any of the 4000 public libraries in England, Wales and Northern Ireland – returning and borrowing books from any branch in order to make usage of libraries more flexible and appealing.

### SERVICE RECORDS

The surviving 2.8 million service records covering First World War soldiers are now available on [www.ancestry.co.uk](http://www.ancestry.co.uk). The full pension record collection may also be searched on Ancestry too.

### GOOD AS NEW

Over the years damage to old family photographs is inevitable, but photo restoration services, such as that at [www.photographrestored.com](http://www.photographrestored.com) can help you see your past pictures in all their former glory.

### CUTS AT KEW

If you were to visit Kew on a Monday, current proposals mean that from September 2009 you might not be able to use the reading rooms. This is just one of the many possible cuts to services due cost cutting measures.

### YORKSHIRE CRIMINALS

York Castle was once home to York Castle Prison and some of Yorkshire's most notorious criminals, some of whom were transported or executed. The names, occupations, details, crimes and fates of these felons may now be viewed in a new online database free of charge at [www.yorkcastleprison.org.uk](http://www.yorkcastleprison.org.uk).

### THE NATIONAL ARCHIVES

Seven additional archives in England and Wales are offering free Access to the 1911 Census. The archives in question are as follows:

**Birmingham Archives & Heritage** Phone 0121 303 1111.

**Devon Record Office (Exeter)** Phone 01392 384253.

**Manchester Archives and Local Studies** Phone 01612 345000.

**Norfolk Record Office** Phone 01603 222599.

**Nottingham Archives** Phone 08449 808080.

**Tyne and Wear Archives** Phone 01912 772248.

**The National Library of Wales (Aberystwyth)** Phone 01970 632800.

### 1 MILLION MILITARY RECORDS

**FamilyRelatives.com** now provides access to a million military records. The conflicts they cover range from the Peninsular Wars (records are available dating from 1808) to the First World War.

### ARCHAIC MEDICAL TERMS

The site provides a list of archaic medical terms for genealogists at [www.genealogy-quest.com/glossaries/diseases1.html](http://www.genealogy-quest.com/glossaries/diseases1.html).

This American site includes other material including outward passengers from the British Isles both fare-paying and convicts.

### NORTH AMERICA

The first 5.4 million records from the US Census returns for 1920 have been transcribed, indexed and uploaded to **FamilySearch Record Search pilot**, where you may search the records free of charge. Further states and records will follow in due course as in total

this census recorded details for 107.5 million people.

### NEW INDEX

Indexes to the marriage records for 64 million weddings are now fully searchable online for free at [www.freebmd.org.uk](http://www.freebmd.org.uk). This new index makes exciting news as every surname has been indexed on a page whereas previously searches had to be made by surname range (ie first and last surname on each page of the printed index).

## WANTED SHORT PIECES, LONG PIECES, ADVERTS, PHOTOS


Stories from your own family history  
or a cutting from an old newspaper.

All very acceptable!

Send them to the Editor

# 1901 CENSUS

The data below has been extracted from the 1901 census and captured using the Get1901Data utility offered by GENUKI. Where the personal ID numbers are consecutive, it has been assumed they are from the same household. The spellings are as the transcription so entries should be checked with the original.

Lesley Blanchard (146) 

## LONDON Part 1

Personal ID	Page ID	Name	Age	Where Born	Census Admin County	Civil Parish	Occupation
233214	8929	Kate Blanchard	28	Liphook Hants	London	Paddn	Housemaid Domestic
281482	10743	Donton Blanchard	53	Leeds York	London	Hammersmith	Commercial Traveller
281483	10743	Susanh Blanchard	50	Warwick	London	Hammersmith	
323192	12338	Ellen Blanchard	22	London Kensington	London	Chelsea	Housemaid Domestic
377696	14432	Arthur Blanchard	31	London Walworth	London	St George Hanover Sq	Storehouseman
377697	14432	Helena Blanchard	30	London Blackfriars	London	St George Hanover Sq	
377698	14432	Arthur Blanchard	6	London Lambeth	London	St George Hanover Sq	
377699	14432	Isobel Blanchard	2	London Southwark	London	St George Hanover Sq	
377700	14432	Hilda Blanchard	6M	London Southwark	London	St George Hanover Sq	
418614	16015	Herbert Blanchard	40	Ireland Dublin	London	Marylebone	Accountant
418615	16015	Elizabeth Blanchard	37	Hants Southsea	London	Marylebone	
432141	16533	Caroline Blanchard	58	Yorks Cottingham	London	St Marylebone	Housekeeper Domestic
433836	16594	Ada Blanchard	36	London Paddington	London	Marylebone	Charwoman
433837	16594	Edith Blanchard	9	London Paddington	London	Marylebone	School
565457	21529	Charles Blanchard	38	London Clerkenwell	London	Islington	Blockmaker
588620	22427	Joseph Blanchard	62	N Known	London	Islington	Pastry Cook
588621	22427	Sophia Blanchard	63	N Known	London	Islington	Book Folder
588622	22427	Arthur Blanchard	20	London Islington	London	Islington	Watch Finisher
638137	24396	W Blanchard	37	Dorset Poole	London	Islington	Shop Keeper
638138	24396	Sarah Blanchard	48	London Clerkenwell	London	Islington	
655971	25048	William Blanchard	29	Liverpool	London	Stoke Newington	Upholsterer
655972	25048	Georgina Blanchard	28	Norfolk Stanfield	London	Stoke Newington	
655973	25048	Jessie Blanchard	3M	London S Newington	London	Stoke Newington	
764167	29085	Annie Blanchard	40	North Wales Town N K	London	St Giles In The Fields St	General Servant Domestic
774515	29556	James Blanchard	44	Yorkshire Bewholme	London	St Clement Danes	General Clerk Cc
774516	29556	Emily Blanchard	45	Suffolk Hundon	London	St Clement Danes	House Keeper Caretaker
794253	30337	Robert Blanchard	25	Wandsworth	London	St Andrew Holborn	Doorkeeper

1901 census LONDON Part 1 *continued*

Personal ID	Page ID	Name	Age	Where Born	Census Admin County	Civil Parish	Occupation
871866	33337	Lucy Blanchard	18	Germany	London	St Christopher Le Stock	General Servant Domestic
882060	33803	Elizabeth Blanchard	76	Kent Greenwich	London	St Dunstons In The West	
1013144	38812	James Blanchard	28	Liverpool Lancs	London	Ratcliff	Pica Lead Man
1013145	38812	Emily Blanchard	27	London	London	Ratcliff	
1013146	38812	James Blanchard	15m	London	London	Ratcliff	
1082222	41505	Anne Blanchard	77	Poplar	London		Servant Housekeeper
1130490	43322	Emily Blanchard	58	Poplar Ldn	London	Poplar	
1130491	43322	Eliza Blanchard	30	Bromley Ldn	London	Poplar	Tent Finisher
1130492	43322	Christopher	25	Poplar Ldn	London	Poplar	Platers Laborer
1176632	45397	Charles Blanchard	24	London St Pancras	London	Newington	Electrical Engineer
1176633	45397	Elizabeth Blanchard	23	London Lambeth	London	Newington	
1176635	45398	Charles Blanchard	1	London Newington	London	Newington	
1208802	46539	William Blanchard	45	London St Saviours	London	Newington	Feet Hat Maker
1208803	46539	Alice Blanchard	40	London Christchurch	London	Newington	
1208804	46539	Charlotte Blanchard	14	London St Peters	London	Newington	Bookfolder
1208805	46539	Alice Blanchard	11	London St Peters	London	Newington	
1208806	46539	Anny Blanchard	5	London St Peters	London	Newington	
1208807	46539	William Blanchard	1	London St Peters	London	Newington	
1219062	46922	Robert Blanchard	45	Hants Liphook	London	Newington	Hoistman S E Ry
1219063	46922	Elizabeth Blanchard	52	Deptford	London	Newington	
1275943	49126	Francis Blanchard	43	Yorks Hull	London	Rotherhithe	
1275944	49126	Thomas Blanchard	12	London Rotherhithe	London	Rotherhithe	
1275945	49126	Herbert Blanchard	8	London Rotherhithe	London	Rotherhithe	
1275946	49126	Cecil Blanchard	4	London Rotherhithe	London	Rotherhithe	
1294113	49833	Elizabeth Blanchard	47	Alford Lincs Gayton Le Marsh	London	Lambeth	Housekeeper Domestic
1301976	50138	Horatio Blanshard	45	Yorkshire Leeds	London	Lambeth	Pawn Brokers Manager
1301977	50138	Elizabeth Blanshard	39	Devon Plymouth	London	Lambeth	
1301978	50138	Kate Blanshard	5	London Lambeth	London	Lambeth	
1319049	50804	Giarvini Blanchard	50	Pavia Italy Italian Sub	London	Lambeth	Waiter Hotel
1319050	50804	Emilia Blanchard	43	Sussex England	London	Lambeth	

1901 census LONDON Part 1 *continued*

Personal ID	Page ID	Name	Age	Where Born	Census Admin County	Civil Parish	Occupation
1321689	50926	Vivian Blanchard	28	London	London	Lambeth	Professor Of Music
1327464	51136	Edward Blanchard	48	Middlesex London	London	Lambeth	Tailor
1344548	51806	Jane Blanchard	24		London	Lambeth	Box Paper Maker
1417884	54583	Susannah Blanchard	64	Isle Of Wight	London	Lambeth	Nurse Sick
1462401	56285	George Blanchard	58	London Lambeth	London	Lambeth	Out Of Business
1493422	57440	Alice Blanchard	19	Wilts Derby Hill	London	Lambeth	Housemaid Dom
1505846	57914	William Blanchard	47	London	London	Lambeth	Teleraphist
1505847	57914	Alice Blanchard	35	Salop Shrewsbury	London	Lambeth	
1505849	57915	Harold Blanchard	3	London West Norwood	London	Lambeth	
1505850	57915	Dorothy Blanchard	1	London West Norwood	London	Lambeth	
1515413	58278	Henry Blanchard	47	Whitechapel Battersea	London	Battersea	Valuer Clerk
1515414	58278	Kate Blanchard	54	London Pimlico	London	Battersea	
1515415	58278	Kate Blanchard	25	London St Dunstan	London	Battersea	Printers Clerk
1515416	58278	Edith Blanchard	21	London Lambeth	London	Battersea	
1578705	60678	George Blanchard	51	Wilts Handley	London	Battersea	Cabman Groom
1578706	60678	Mary Blanchard	41	Norfolk ...	London	Battersea	
1578707	60678	George Blanchard	11	Surrey Kennington	London	Battersea	
1578708	60678	Gladys Blanchard	9	Surrey Kennington	London	Battersea	
1578709	60678	James Blanchard	8	Surrey Kennington	London	Battersea	
1578710	60678	William Blanchard	5	Surrey Battersea	London	Battersea	
1578712	60679	John Blanchard	1M	Surrey Battersea	London	Battersea	
1614870	62050	John Blanshard	64	London Holborn	London	Battersea	Printers Timekeeper
1614871	62050	John Blanshard	35	London Pimlico	London	Battersea	Messenger Doctors
1614872	62050	Sarah Blanshard	24	Surrey Battersea	London	Battersea	
1614873	62050	Sarah Blanshard	16	Surrey Battersea	London	Battersea	Art Metal Worker
1614874	62050	Edward Blanshard	14	Somerset Taunton	London	Battersea	Printers Reading Boy
1621694	62315	Beatrice Blanchard	20	Berks Stock Cross	London	Battersea	General Servant Domestic
1678310	64468	Florence Blanchard	29	Surrey Battersea	London	Wandsworth	
1678311	64468	May Blanchard	7	Surrey Battersea	London	Wandsworth	
1678312	64468	Kate Blanchard	9	Surrey Battersea	London	Wandsworth	



1901 census LONDON Part 1 *continued*

Personal ID	Page ID	Name	Age	Where Born	Census Admin County	Civil Parish	Occupation
1680843	64557	Fred Blanchard	50	Dorset Handley	London	Wandsworth	General Labourer
1680844	64557	Louisa Blanchard	50	London Westminster	London	Wandsworth	
1680845	64557	Thos Blanchard	17	Wandsworth	London	Wandsworth	General Labourer
1680846	64557	Louisa Blanchard	14	Wandsworth	London	Wandsworth	
1680847	64557	Fred Blanchard	11	Wandsworth	London	Wandsworth	
1710918	65718	William Blanchard	19	Kennington London	London	Camberwell	Railway Porter
1713640	65836	Samuel Blanchard	38	London Westminster	London	Camberwell	Clerk Commercial
1713641	65836	Caroline Blanchard	36	Surrey Camberwell	London	Camberwell	
1713642	65836	Samuel Blanchard	15	Surrey Camberwell	London	Camberwell	
1713643	65836	John Blanchard	13	Surrey Camberwell	London	Camberwell	
1713644	65836	Henry Blanchard	8	Surrey Camberwell	London	Camberwell	
1721634	66143	William Blanchard	57	St Lukes	London	Camberwell	Binders Assistant
1721635	66143	William Blanchard	29	Lambeth	London	Camberwell	Binders Assistant
1721636	66143	Mary Blanchard	27	Camberwell	London	Camberwell	Servant Domestic
1721637	66143	Henry Blanchard	25	Camberwell	London	Camberwell	Printers Assistant
1721638	66143	Louisa Blanchard	20	Camberwell	London	Camberwell	Machinist Sewing
1732696	66549	Emma Blanchard	65	London St Lukes	London		Shop ...
1750468	67237	Beatrice Blanchard	18	Lond West Norwood	London	Camberwell	
1764692	67758	John Blanchard	27	London Lambeth	London	Camberwell	Timber Merchants Clerk
1764693	67758	Ada Blanchard	21	London Lambeth	London	Camberwell	
1781138	68378	Alfred Blanshard	30	Islington London	London	Camberwell	Commercial Clerk
1781139	68378	Florence Blanshard	30	Southwark London	London	Camberwell	
1781140	68378	Alfred Blanshard	5	Camberwell London	London	Camberwell	
1783153	68457	Susannah Blanchard	59	London City	London	Camberwell	No Occupation
1783154	68457	Amy Blanchard	25	London Lambeth	London	Camberwell	Waitress
1783155	68457	Alice Blanchard	23	London Lambeth	London	Camberwell	Domestic Servant
1783156	68457	Agnes Blanchard	21	London Lambeth	London	Camberwell	Waitress
1783157	68457	Adeline Blanchard	19	London Lambeth	London	Camberwell	Packer Sweet
1783158	68457	Daisy Blanchard	17	London Lambeth	London	Camberwell	
1859081	71308	Ada Blanchard	35	London Lambeth	London	Camberwell	
1859082	71308	Florrie Blanchard	11	London Newington	London	Camberwell	
1859083	71308	Ernest Blanchard	10	London Newington	London	Camberwell	

1901 census LONDON Part 1 *continued*

Personal ID	Page ID	Name	Age	Where Born	Census Admin County	Civil Parish	Occupation
1859084	71308	Maude Blanchard	6	London Newington	London	Camberwell	
1859085	71308	Lily Blanchard	2	London Camberwell	London	Camberwell	
1859086	71308	Arthur Blanchard	1	London Camberwell	London	Camberwell	
1906506	73084	John Blanchard	49	N K	London	St Paul Deptford	Stillman
1906507	73084	Ellen Blanchard	48	N K	London	St Paul Deptford	
1906508	73084	Susan Blanchard	20	London Deptford	London	St Paul Deptford	Bottle Washer
1906509	73084	Mary Blanchard	19	London Deptford	London	St Paul Deptford	
1906510	73084	William Blanchard	18	London Deptford	London	St Paul Deptford	Labourer Tar Works
1906511	73084	Ada Blanchard	16	London Deptford	London	St Paul Deptford	Wood Yard Giler
1906512	73084	Sarah Blanchard	13	London Deptford	London	St Paul Deptford	
1906533	73085	Nellie Blanchard	24	London Deptford	London	St Paul Deptford	
1907730	73130	Henry Blanchard	23	Deptford Kent	London	St Paul Deptford	Asphalte Labourer
1907731	73130	Caroline Blanchard	23	Deptford Kent	London	St Paul Deptford	
1907732	73130	Henry Blanchard	3	Deptford Kent	London	St Paul Deptford	
1907733	73130	John Blanchard	1	Deptford Kent	London	St Paul Deptford	
1907734	73130	Carrie Blanchard	1M	Deptford Kent	London	St Paul Deptford	
1936797	74189	George Blanchard	63	Deptford	London	St Pauls Deptford	Living In Own Means
1936798	74189	Maria Blanchard	60	Deptford	London	St Pauls Deptford	
1936799	74189	Alice Blanchard	33	Deptford	London	St Pauls Deptford	Laundress
1936800	74189	Edward Blanchard	28	Deptford	London	St Pauls Deptford	General Labourer
1936801	74189	Joseph Blanchard	20	Deptford	London	St Pauls Deptford	General Labourer
1937696	74234	William Blanchard	37	London Deptford	London	St Pauls Deptford	Warehouse Labourer
1937697	74234	Louisa Blanchard	36	Hants Portsmouth	London	St Pauls Deptford	
1937698	74234	Colin Blanchard	10	London Lewisham	London	St Pauls Deptford	
1937699	74234	Joseph Blanchard	5	London Deptford	London	St Pauls Deptford	
1937700	74234	Louisa Blanchard	2	London Deptford	London	St Pauls Deptford	
2029123	77703	Emma Blanchard	28	Kent Deptford	London	Lewisham	General Sevt Domestic
2035168	77938	Edward Blanchard	73	Yorks Beverley	London	Lewisham	Living On Own Means
2035169	77938	Edward Blanchard	35	France British Subject	London	Lewisham	Clerk Railway
2035170	77938	Frederick Blanchard	30	France British Subject	London	Lewisham	Clerk Merchant
2035171	77938	Ethel Blanchard	28	France British Subject	London	Lewisham	



1901 census LONDON Part 1 *continued*

Personal ID	Page ID	Name	Age	Where Born	Census Admin County	Civil Parish	Occupation
2064929	79113	Ernest Blanshard	32	Islington London	London	Lewisham	Tracller Clor Manufacturer
2064930	79113	Bessie Blanshard	26	... Kent	London	Lewisham	
9230365	381587	Thomas Blanchard	50	Berks	London	Paddington	General Labourer
9230366	381587	Annie Blanchard	49	London Paddington	London	Paddington	
9230367	381587	George Blanchard	22	London Paddington	London	Paddington	Railway Porter G W R
9230368	381587	Ernest Blanchard	20	London Chelsea	London	Paddington	Aerator At Mineral Water Factory
9230369	381587	Thomas Blanchard	15	London Kensington	London	Paddington	Railway Porter G W Ry
9230370	381587	Richard Blanchard	11	London Hampstead	London	Paddington	
9297341	384077	Ada Blanchard	30	Paddington	London	Paddington	General Servant
9309907	384588	Frederick Blanchard	26	Paddington London	London	Paddington	House Painter
9309908	384588	Florence Blanchard	23	Kilburn London	London	Paddington	
9309939	384589	Elizabeth Blanchard	34	Kensington London	London	Paddington	
9309940	384589	Ernest Blanchard	29	Paddington London	London	Paddington	Machinist Printry
9309941	384589	Joseph Blanchard	24	Paddington London	London	Paddington	Machinist Printry
9309942	384589	George Blanchard	22	Paddington London	London	Paddington	Drapers Porter
9309943	384589	William Blanchard	19	Paddington London	London	Paddington	Plumbers Labourer
9324643	385124	Edward Blanchard	40	London Marylebone	London	Paddington	Railway Messenger
9347709	385953	Helen Blanchard	24	London	London	Kensington	House Keeper Domestic
9347710	385953	Susan Blanchard	50	London	London	Kensington	Servant Domestic
9369749	386788	Sophia Blanchard	65	London W	London	Kensington	Slewed Ecl Shop
9369750	386788	Emily Blanchard	25	London W	London	Kensington	
9373736	386938	Charles Blanchard	39	London Paddington	London	Kensington	General Smith
9373737	386938	Alice Blanchard	37	Shepton Mallet Somerset	London	Kensington	
9373738	386938	Cecilia Blanchard	9	London Kensington	London	Kensington	
9373739	386938	Bessie Blanchard	7	London Kensington	London	Kensington	
9373740	386938	Louisa Blanchard	4	London Kensington	London	Kensington	
9373741	386938	William Blanchard	1	London Kensington	London	Kensington	
9373742	386938	&nbsp; Blanchard	1	London Kensington	London	Kensington	

